

# Pullman & Comet Basics

Cosco Industries has been offering the American Made Pullman Traditional Daters and Numberers and Comet Self-Inking Stamps for over a century.

This unique product offering comes in many styles and configurations. In addition to the many standard Pullman and Comet configurations, Cosco Industries can manufacture many specials.

The charts and information below are designed to aid you in choosing the proper stamp for your needs.

## PULLMAN & COMET CODE DEFINITIONS

CODE	TYPE	FONT	DATER TYPE	DEFINITION	ADDITIONAL INFORMATION
AAG	NON SELF-INKING	GOTHIC	N/A	ALPHA NUMERIC GOTHIC	A-Z AND 0-9 ON EACH BAND
AAR	NON SELF-INKING	ROMAN	N/A	ALPHA NUMERIC ROMAN	A-Z AND 0-9 ON EACH BAND
AG	NON SELF-INKING	GOTHIC	N/A	ALPHA GOTHIC	A-Z OR 0-9 ON EACH BAND
AR	NON SELF-INKING	ROMAN	N/A	ALPHA ROMAN	A-Z OR 0-9 ON EACH BAND
BFPD	NON SELF-INKING	GOTHIC	FULL DATE	BOLD FACED PULLMAN DATER	LARGE TYPE BOLD FACED DATER
BPD	NON SELF-INKING	GOTHIC	FULL DATE	BROOKLYN PULLMAN DATER	TOP AND BOTTOM DIE PLATES
BRC	NON SELF-INKING	GOTHIC	FULL DATE	BROOKLYN REVENUE CANCELLER DATER	TOP OR BOTTOM DIE PLATE
CAG	SELF-INKING	GOTHIC	N/A	COMET ALPHA GOTHIC	A-Z OR 0-9 ON EACH BAND
CAR	SELF-INKING	ROMAN	N/A	COMET ALPHA ROMAN	A-Z OR 0-9 ON EACH BAND
CFBD	SELF-INKING	GOTHIC	FULL DATE	COMET FLAT BAND DATER	FULL DIE PLATE DATER
CLD	SELF-INKING	GOTHIC	FULL DATE	COMET LINE DATER	DATE STAMP
CLN	SELF-INKING	ROMAN	N/A	COMET LINE NUMBERER	NUMBERING STAMP
CLXCN	SELF-INKING	GOTHIC	N/A	COMET LINE EXTRA CONDENSED NUMBERING STAMP	NUMBERING STAMP
CPL	SELF-INKING	N/A	N/A	COMET PLAIN DIE PLATE SELF-INKER	FULL DIE PLATE WITH CUSHION
CVN	SELF-INKING	ROMAN	N/A	COMET VERLARGE NUMBERER	LARGE FONT NUMBERING STAMP
CVXCN	SELF-INKING	GOTHIC	N/A	COMET VERILARGE EXTRA CONDENSED NUMBERING STAMP	LARGE FONT NUMBERING STAMP
CXCLD	SELF-INKING	GOTHIC	ABBREVIATED YEAR	COMET EXTRA CONDENSED LINE DATER	ABBREVIATED DATE STAMP
HOPD	NON SELF-INKING	GOTHIC	FULL DATE	HOTEL PULLMAN DATER	FULL DAY BAND WITH FULL DATE
LPN	NON SELF-INKING	ROMAN	N/A	LOCAL PULLMAN NUMBERING STAMP	DIE SPACE TO THE SIDE OF FULL DATE
LXCPD	NON SELF-INKING	GOTHIC	ABBREVIATED YEAR	LOCAL EXTRA CONDENSED PULLMAN DATER	DIE SPACE TO THE SIDE OF ABBREVIATED DATE
PC	NON SELF-INKING	GOTHIC	FULL DATE	PULLMAN CO-DATER	FULL DATE WITH ALPHA BANDS
PD	NON SELF-INKING	GOTHIC	FULL DATE	PULLMAN DATER	DATE STAMP
PN	NON SELF-INKING	ROMAN	N/A	PULLMAN NUMBERING STAMP	NUMBERING STAMP
RA	NON SELF-INKING	ROMAN	N/A	ROMAN ALPHA	A-Z OR 0-9 ON EACH BAND
VFN	NON SELF-INKING	ROMAN	N/A	VERTICAL FILE NUMBERER	VERTICAL NUMBERING STAMP
XCPD	NON SELF-INKING	GOTHIC	ABBREVIATED YEAR	EXTRA CONDENSED PULLMAN DATER	DATE STAMP
XCPN	NON SELF-INKING	GOTHIC	N/A	EXTRA CONDENSED PULLMAN NUMBERING STAMP	NUMBERING STAMP



Each Pullman Stamp is handcrafted in the USA

# Pullman & Comet Bands

Pullman Traditional Daters and Numberers are manufactured using high quality rubber for the bands. We recommend using water based ink with these bands. When using other industrial inks we recommend our synthetic Buna bands.

## Band Configurations

Characters supplied on band and assembly—position of bands contained in stock numbering stamps.

4 Band Stamp	6 Band Stamp	4 Band Stamp	6 Band Stamp
1111	111111	1111	111111
2222	222222	2222	222222
3333	333333	3333	333333
4444	444444	4444	444444
5555	555555	5555	555555
6666	666666	6666	666666
7777	777777	7777	777777
8888	888888	8888	888888
9999	999999	9999	999999
0000	000000	0000	000000
# ¼ . ¢	# ¼ . ¢ ¼ #	# ¼ . ¢	# ¼ . ¢ ¼ #
\$ ½ - #	\$ ½ - # ½ ¢	\$ ½ - #	\$ ½ - # ½ ¢
X ¾ X /	X ¾ X / ¾ X	X ¾ X /	X ¾ X / ¾ X

PN layout for sizes #00 thru #4.

XCPN layout for sizes #00 thru #4.

4 Band Stamp	6 Band Stamp	4 Band Stamp	6 Band Stamp
1111	111111	1111	111111
2222	222222	2222	222222
3333	333333	3333	333333
4444	444444	4444	444444
5555	555555	5555	555555
6666	666666	6666	666666
7777	777777	7777	777777
8888	888888	8888	888888
9999	999999	9999	999999
0000	000000	0000	000000
\$ ¼ ½ ¢	\$ ¼ - . ½ ¢	\$ ¼ ½ ¢	\$ ¼ - . ½ ¢
# ½ ¾ #	# ½ X / ¾ #	# ½ ¾ #	# ½ X / ¾ #

Layout for sizes PN-5  
Length of frame will accommodate only 12 characters.

Layout for sizes XCPN-5 and XCPN-600  
Length of frame will accommodate only 12 characters.

Each Pullman Stamp is handcrafted in the USA



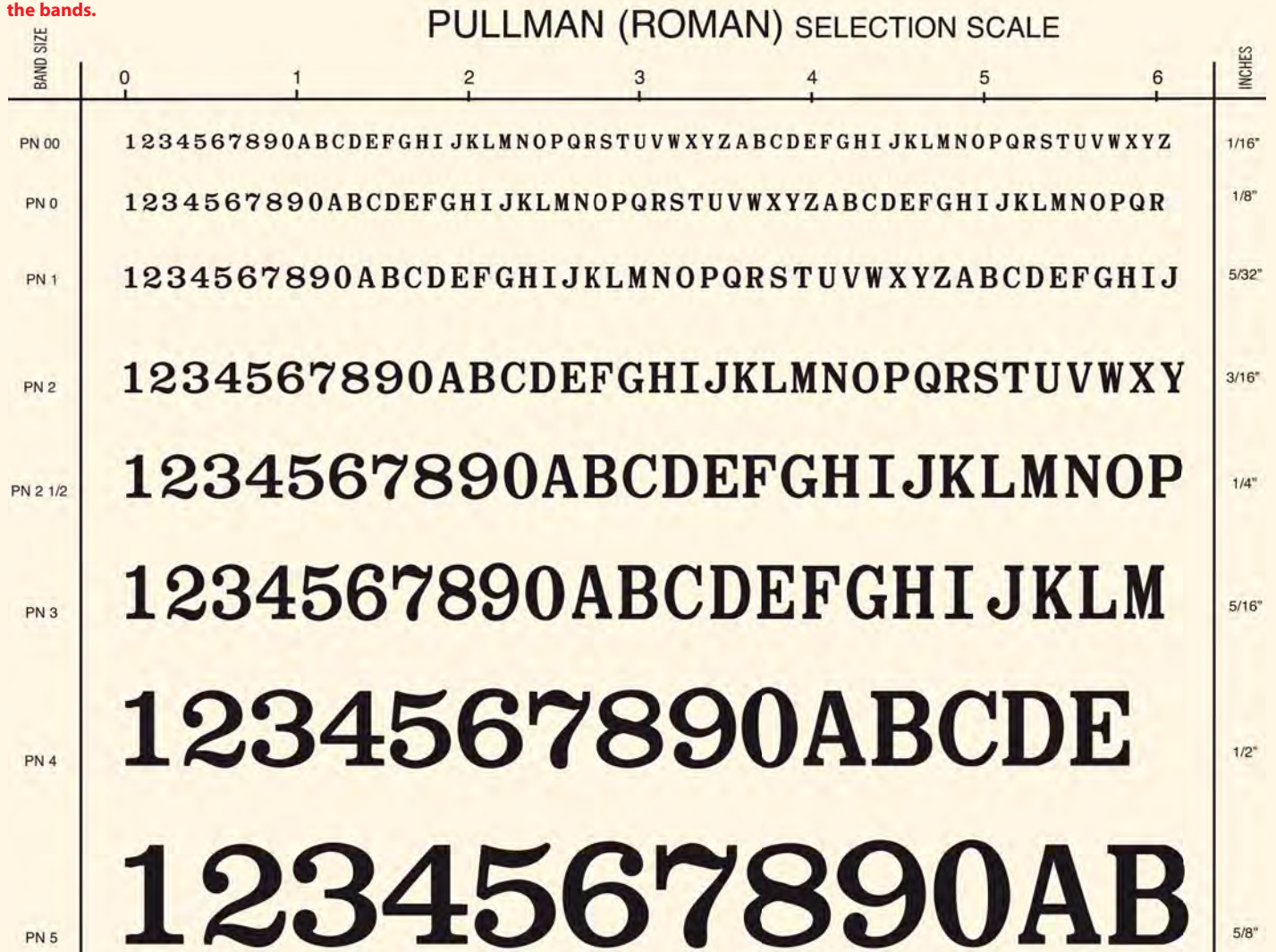
Characters supplied on band and assembly—position of bands contained in stock numbering stamps.

4 Band Stamp	6 Band Stamp
1111	111111
2222	222222
3333	333333
4444	444444
5555	555555
6666	666666
7777	777777
8888	888888
9999	999999
0000	000000
X-X-	X-X-X-

Layout for sizes XCPN-1000 and XCPN-1200  
 Length of frame will accommodate only 11 characters.

### Pullman & Comet Character Scale Charts

The character scale shows the correct height and size of the characters, however doesn't reflect the exact positioning or spacing of the characters on the bands.



**Each Pullman Stamp is handcrafted in the USA**

PULLMAN (GOTHIC) SELECTION SCALE

BAND SIZE	0	1	2	3	4	5	6	INCHES
XCPN 00	1234567890ABCDEFGHI JKLMNOPQRSTUVWXYZ ABCDEFGHI JKLMNOPQRSTUVWXYZ							1/16"
XCPN 0X	1234567890ABCDEFGHI JKLMNOPQRSTUVWXYZ ABCDEFGHI JKLMNOP							3/32"
XCPN 0	1234567890ABCDEFGHI JKLMNOPQRSTUVWXYZ ABCDEFGHI JKLMNOPQRSTUVWXYZ							1/8"
XCPN 1	1234567890ABCDEFGHI JKLMNOPQRSTUVWXYZ ABCDEFGHI JKLMNOPQRSTU							5/32"
XCPN 2	1234567890ABCDEFGHI JKLMNOPQRSTUVWXYZ ABCDEFGH							3/16"
XCPN 2 1/2	1234567890ABCDEFGHI JKLMOPQRSTUVWXYZ							1/4"
XCPN 3	1234567890ABCDEFGHI JKLMNOPQRST							5/16"
XCPN 4	1234567890ABCDEFGHI JKLM							1/2"
XCPN 5	1234567890ABCDEFG							5/8"
XCPN 600	1234567890ABCDE							3/4"
XCPN 1000	12345678ABC							1"
XCPN 1200	123456ABC							1 1/4"

Each Pullman Stamp is handcrafted in the USA



**Pullman Line Daters (Full Year)**

date sizes available	#0, #1, #1 1/2, #2, #2 1/2, #3
packaging	

**Pullman line daters provide the largest selection of sizes and styles for conventional or special dating needs. Pullman daters are made with the finest materials, to rigid specifications by skilled craftsmen.**

**Used in offices, factories, shops, stores and homes the Pullman dater prints months, days and the year. All daters on this page have four bands made of vulcanized rubber, knurled wheels to easily turn bands to desired date and hard chrome plated frames.**

**Pullman daters with special bands can be custom ordered. Please call for pricing.**



APR 12 2014  
PD-0

APR 12 2014  
PD-1

APR 12 2014  
PD-1 1/2

APR 12 2014  
PD-2

APR 12 2014  
PD-2 1/2

APR 12 2014  
PD-3

**Universal Pullman Daters**

date sizes available	#1, #1 1/2,
packaging	

**Passbook Pullman Daters**

date sizes available	#0, #1, #1 1/2, #2
packaging	



10.25.14  
UPD-1

12.22.14  
UPD-1 1/2

FEB 11 '14  
PBPD-0

FEB 11 '14  
PBPD-1

FEB 11 '14  
PBPD-1 1/2

FEB 11 '14  
PBPD-2

**Long Ledger Dater**

date sizes available	#00
packaging	

**Short Ledger Dater\***

date sizes available	#00
packaging	

\* image not shown

**Long ledger daters are ideal for banks, offices, ledgers and other accounting applications.**

**Long Frame Ledger Alphabet Dater\***

date sizes available	#00, includes three alphabet bands A to Z in addition to the regular date bands.
packaging	

\* image not shown




JAN 11 '19  
LFLD-00



**Each Pullman Stamp is handcrafted in the USA**

**Bold Face Pullman Daters\***

date sizes available	#2, #2 1/2, #3 #4, #5, #6 and 1000 (image not shown)
packaging	

Pullman daters with special bands can be custom ordered. Please call for pricing.



**MAR 12 2014**

BFPD-6

**MAR 12 2014**

BFPD-5

**MAR 12 2014**

BFPD-4

**MAR 12 2014**

BFPD-3

**MAR 12 2014**

BFPD-2 1/2

**MAR 12 2014**

BFPD-2

**Extra Condensed Pullman Line Daters\***

date sizes available (abbreviated year)	#00, #0, #1, #1 1/2, #2, #2 1/2, #3
packaging	

Clear Gothic lettering and abbreviated years on the year band permit use of the Pullman extra condensed line daters in almost any confined space.



**SEP 12 '14**

XCPD-0

**SEP 12 '14**

XCPD-1

**SEP 12 '14**

XCPD-1 1/2

**SEP 12 '14**

XCPD-2

**SEP 12 '14**

XCPD-2 1/2


**SEP 12 '14**

XCPD-3

Each Pullman Stamp is handcrafted in the USA



## Pullman Local Style Daters

date sizes available	#0, #1, #1 1/2, #2
packaging	
LPD	full year band



**MONEY ORDER** APR 12 2014


LPD-1 X 1 3/4

The Pullman Local Style Daters can be used to create an impression before, after or in the center of any date assembly. The desired copy or image is placed on the printing bridge with any combination of date, figure, lettering or special bands.

Bridge impression area is 5/16" in height.

Please call for pricing of custom bands or configurations.


## Pullman Local Style Daters

date sizes available	#0, #1, #1 1/2, #2
packaging	
LXCPD	abbreviated year band

**PRICE AND AMOUNT O.K.** SEP 12 '14

LXCPD-2 X 3 3/16

## Pullman Codaters

date sizes available	#0X, #1, #1 1/2
number of alphabet bands (all alphabet bands also contain a dash (-) and a period (.) and are affixed to the date unless otherwise specified.)	-5 = 3 A-Z bands -6 = 4 A-Z bands -7 = 5 A-Z bands -8 = 6 A-Z bands
packaging	




AAA JAN 12 2012

PC NO. 1 1/2-5

Co-daters combine date impressions with selections of various letters of the alphabet. These stamps are often used for coding, dating, pricing and reference systems. Alphabet bands contain the complete alphabet plus a dash and period. Co-daters contain four date bands consisting of the following; 1 – abbreviated month, 2 – day bands, 1 – full year band with 6 consecutive years.

## Pullman Double Daters

date sizes available	#1 1/2
packaging	
DDXC	abbreviated year band
DDPD	full year band

APR 12 '11 TO MAY 12 '12

DDXC-1 1/2

Please call for custom sizes not listed.



**Each Pullman Stamp is handcrafted in the USA**

**Pullman Condensed Letter Band Daters**

date sizes available	#1, #1 1/2, #2
number of alphabet bands	1 A-M band 1 N-Z band
packaging	

JAN 2 2012 AN  
GPD 1 1/2

**Pullman Special Purpose Line Daters\***

date sizes available	#0, #1, #1 1/2, #2
packaging	

These unique Special Line Daters allow the user to choose from many different messages and type styles for their Pullman line dater. See below for all the available specialty stock bands.



**THURSDAY**

DP-1 1/2 (Day Printers are available upon request.)

**SEPTEMBER**

MP-2 (Month Printers are available upon request.)

**ANS'D APR 12 2015**

PD-10

**SEP 24 2014 - 9:30 PM**

PYHMD-1 1/2

**1 2 3 4 5 6 FEB 12 '15**

EXPXC-1 1/2

**1 2 3 4 5 6 MAR 12 '15**

EXPXC-2

**DUPLICATE APR 12 2014**

WPPD-1 1/2

**WEDNESDAY APR 12 2014**

HoPD-1 1/2

**WEDNESDAY APR 12 2014**

HoPD-2

**Characters on the stock bands used in making combination daters appearing on this page**

Abbr. Day Bands	Day Band	Abbr. Month Band	Month Band	Day Bands	Year Band	Word Band
Mon	Monday	Jan	January	11	20XX	Shipped
Tues	Tuesday	Feb	February	22	20XX	Charged
Wed	Wednesday	Mar	March	33	20XX	Cancelled
Thu	Thursday	Apr	April	44	20XX	Paid
Fri	Friday	May	May	55	20XX	Original
Sat	Saturday	Jun	June	66	20XX	Duplicate
Sun	Sunday	Jul	July	77	Ansd	Triplicate
		Aug	August	88	Recd	Entered
		Sep	September	99	Entd	Received
		Oct	October	00	Paid	Answered
		Nov	November	--	A.M.	Filed
		Dec	December	xx	P.M.	Packed

**Prefix or Affix Band-Style**

"A"	"B"	"C"
REC'D	SHIP'D	O.K.
ENT'D	FRG'T	INVC
ANS'D	EXPRS	INVTY
PAID	P.Post	VOID
SHIP'D	BILLED	ACK'D
CHG'D	FILLED	CHG'D
BAL	PCK'D	SHIP'D
CAN	C.O.D.	RET'D
C.O.D.	CHK'D	CAN
FILLED	CHG'D	ANS'D
FILED	VOID	REC'D
RET'D	MAIL	PAID

Each Pullman Stamp is handcrafted in the USA





**Pullman XC Line Numberers\***

number sizes available	#00, #0X, #0, #1, #2, #2 1/2, #3, #4, #5
packaging	
XC = Gothic Style Font	

Pullman numbering stamps are available in two distinctive fonts to fit your numbering needs. These traditional style numbering stamps are perfect for use in offices, factories and stores.

Pullman Numbering Stamps can be custom ordered. Please call for pricing.

**XCPN 1-14**

type of numberer      size      number of bands

XCPN 1000

34

XCPN 1200

12



- XCPN 00 2 3 4 5 6 7 8 9
- XCPN 0X 2 3 4 5 6 7 8 9
- XCPN 0 2 3 4 5 6 7 8 9
- XCPN 1 2 3 4 5 6 7 8 9
- XCPN 2 2 3 4 5 6 7 8 9
- XCPN 2 1/2 2 3 4 5 6 7 8 9
- XCPN 3 2 3 4 5 6 7 8 9
- XCPN 4 2 3 4 5 6
- XCPN 5 2 3 4 5
- XCPN 600 2 3 4

**Pullman PN Line Numberers\***

number sizes available	#00, #0, #1, #2, #2 1/2, #3, #4, #5
packaging	
PN = Roman Style Font	

\* Custom bands can be ordered on Pullman Numberers.

Buna rubber bands are available for use with industrial inks.

Please call for pricing.

**PN 1-14**

type of numberer      size      number of bands



- PN 00 2 3 4 5 6 7
- PN 0 2 3 4 5 6 7
- PN 1 2 3 4 5 6 7
- PN 2 2 3 4 5 6 7
- PN 2 1/2 2 3 4 5 6 7
- PN 3 2 3 4 5 6 7
- PN 4 2 3 4 5
- PN 5 2 3 4



**Each Pullman Stamp is handcrafted in the USA**

**Pullman Vertical File Numberers\***

number sizes available	#2, #2 1/2, #3
packaging	

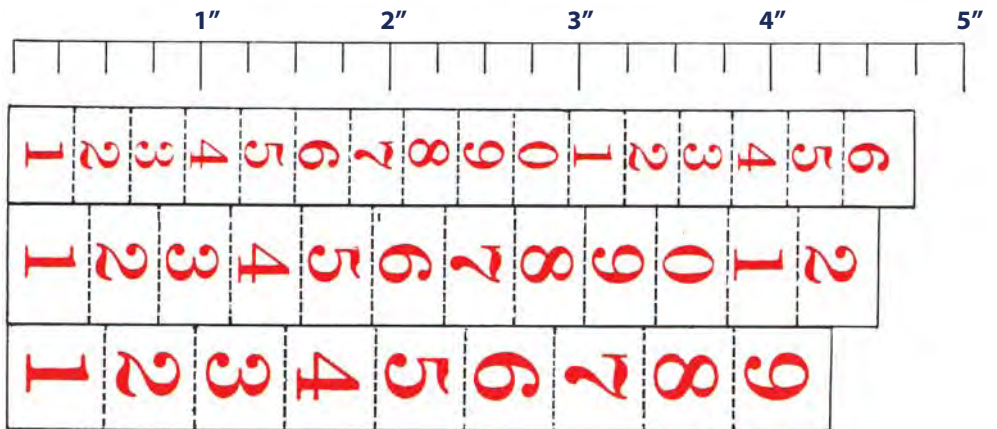
Custom bands can be ordered on Pullman Vertical Numberers. VFN 1 style can be special ordered

Buna rubber bands are available for use with industrial inks.

Please call for pricing.

**VFN 2-14**

type of numberer    size    number of bands



**Pullman Speedroller**

sizes available	#1 (1 3/16 x 4") #2 (3" x 4")
packaging	
Roller is 1 3/8 dia.	



COSCO PRODUCTS  
 COSCO PRODUCTS  
 COSCO PRODUCTS

#2 (Roller 3" Wide)

Each Pullman Stamp is handcrafted in the USA



**Pullman Alphabet Stamps\***

figure sizes available	#00, #0X, #0, #1, #2, #2 1/2, #3, #4, #5
packaging	
AG = Alphabet Stamp with Gothic Style Font RA = Alphabet Stamp with Roman Style Font	

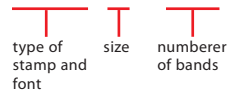
\* Additional sizes are available.

Buna rubber bands are available for use with industrial inks.

Please call for additional sizes and pricing.



**AG 1-14**



SIZES	STYLES	MAX NO. BANDS	SIZE OF CHAR.
AG #00	ABCDEF	33	1/16"
AG #0X	ABCDEF	33	3/32"
AG #0	ABCD	27	1/8"
AG #1	ABCD	25	5/32"
RA#00	ABCD	28	3/32"
RA #0	ABCD	25	1/8"
RA #1	ABC	18	5/32"
AR #1	ABC	18	5/32"
RA #2	AB	19	3/16"
AG #2	PHI	22	3/16"
RA #2½	AB	17	1/4"
AG #2½	CL	15	1/4"
RA #3	AB	15	5/16"
AG #3	TU	17	5/16"

BANDS CONTAIN	
AG STYLE	RA STYLE
A	A
B	B
C	C
D	D
E	E
F	F
G	G
H	H
I	I
J	J
K	K
L	L
M	M
N	N
O	O
P	P
Q	Q
R	R
S	S
T	T
U	U
V	V
W	W
X	X
Y	Y
Z	Z
.	.
-	-

**Pullman Alpha-Numeric Stamps\***

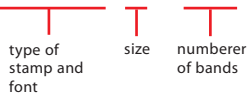
figure sizes available	#0, #1, #2, #2 1/2, #3,
packaging	
AAG = Alpha-Numeric Stamp with Gothic Style Font AAR = Alpha-Numeric Stamp with Roman Style Font	

\* Additional sizes are available.

Buna rubber bands are available for use with industrial inks.

Please call for additional sizes and pricing.

**AAG 1-14**



Alpha-Numerical Stamp with Gothic Style Font

BANDS CONTAIN	
AAG STYLE	AAR STYLE
A 1	A 1
B 2	B 2
C 3	C 3
D 4	D 4
E 5	E 5
F 6	F 6
G 7	G 7
H 8	H 8
I 9	I 9
J 0	J 0
K 1	K 1
L 2	L 2
M 3	M 3
N 4	N 4
O 5	O 5
P 6	P 6
Q 7	Q 7
R 8	R 8
S 9	S 9
T 0	T 0
U ¼	T U ¼
V ½	V W ½
W ¾	W X ¾
X \$	X \$
Y ¢	Y ¢
Z .	Z .
-	-
X	X



Each Pullman Stamp is handcrafted in the USA

**Pullman Long Ledger Frame Alphabet and Numbering Stamps**

date sizes available	#00
number of alphabet bands (all alphabet bands also contain a dash (-) and a period (.) and are affixed to the date unless otherwise specified.)	-5 = 3 A-Z bands -6 = 4 A-Z bands -7 = 5 A-Z bands -8 = 6 A-Z bands
packaging	



A 1	A 1
B 2	B 2
C 3	C 3
D 4	D 4
E 5	E 5
F 6	F 6
G 7	G 7
H 8	H 8
I 9	I 9
J 0	J 0
K 1	K 1
L 2	L 2
M 3	M 3
N 4	N 4
O 5	O 5
P 6	P 6
Q 7	Q 7
R 8	R 8
S 9	S 9
T 0	T 0
U ¼	U ¼
V ½	V ½
W ¾	W ¾
X \$	X \$
Y ¢	Y ¢
Z .	Z .
-	-
X	X

**LFLAF 00-6**

type of numberer      size      number of bands

LAG #00      LRA #00

**Pullman XC Line Numberers\***

number sizes available	#00, #0X, #0, #1, #2, #2 1/2, #3, #4, #5
packaging	
XC = Gothic Style Font	



**BEEF**

- Round Steak
- Swiss Steak
- Rolled Rump Roast
- Pot Roast
- Flank Steak
- Rump Roast
- Sirloin Steak
- Cube Steak
- Porterhouse Steak
- T-Bone Steak
- Club Steak
- Rolled Rib Roast
- Rib Roast
- Rib Steak
- Rib Boil
- Roast Beef
- Beef Short Ribs
- Chuck Roast
- Chuck Steak
- Neck Bone
- Hamburger
- Soup Bone
- Boiling Beef
- Beef Liver

**PORK**

- Pork Chops
- Pork Loin Roast
- Pork Tenderloin
- Back Bone
- Pork Shank
- Bacon
- Fresh Side Pork
- Spare Ribs
- Fresh Ham Steak
- Fresh Ham Roast
- Pork Sholdr. Steak
- Pork Sholdr.Roast
- Pork Steak
- Pork Roast
- Boston Butt
- Neck Bone
- Sausage
- Lard
- Pigs Feet
- Pork Liver
- Smoked Ham Steak
- Smoked Ham Roast
- Pig Head
- Link Sausage

**No. 2 1/2 LS Locker Stamp**

**RIB ROAST**

**No. 3 LS Locker Stamp**

**RIB ROAST**

**Each Pullman Stamp is handcrafted in the USA**



If you don't see what you need, we might be able to make it!

Because the Pullman Line is manufactured in the USA, there are various options open to customers who need a special configuration. Some of the special modifications Cosco can make for your Pullman stamps are custom die plates, extended frames, tandem stamps, and offset brackets.

If there is an application that calls for a special stamp, call us for a quote.



Custom Die Plates



Extension Frames



Tandem Stamps



Offset Brackets

#### Industrial Stamp Pads in Metal Housing

sizes available	2 1/2" x 3 3/4" 3 1/8" x 5" 3 3/4" x 6" 4 3/4" x 8 3/4" 6 3/4" x 10 1/2"
packaging	



These heavy duty stamp pads are ideal for use with industrial inks.



Each Pullman Stamp is handcrafted in the USA